



Programa
Universitario
de Estudios
del **Desarrollo**

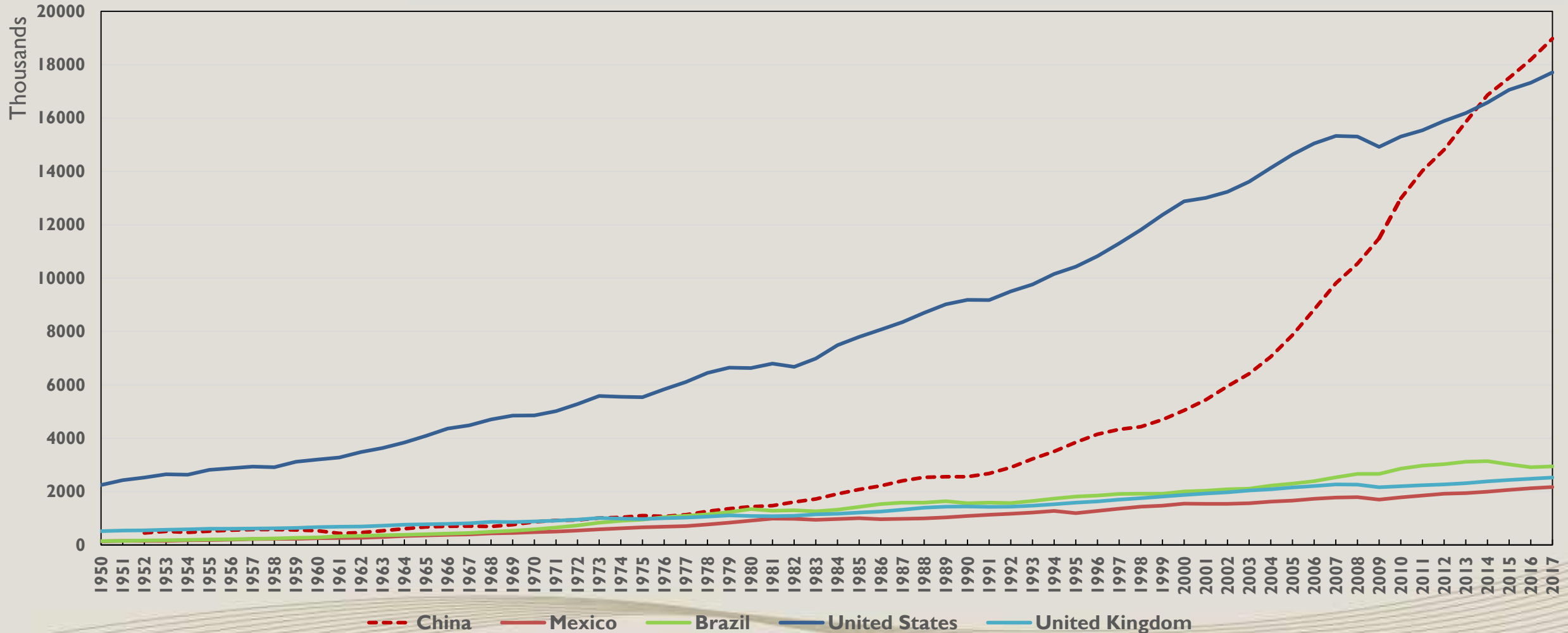
UNAM

“The Experiences of Mexico and China. What can we learn?”

Rolando Cordera Campos



Real GDP at constant 2011 national prices (in mil. 2011 US\$)

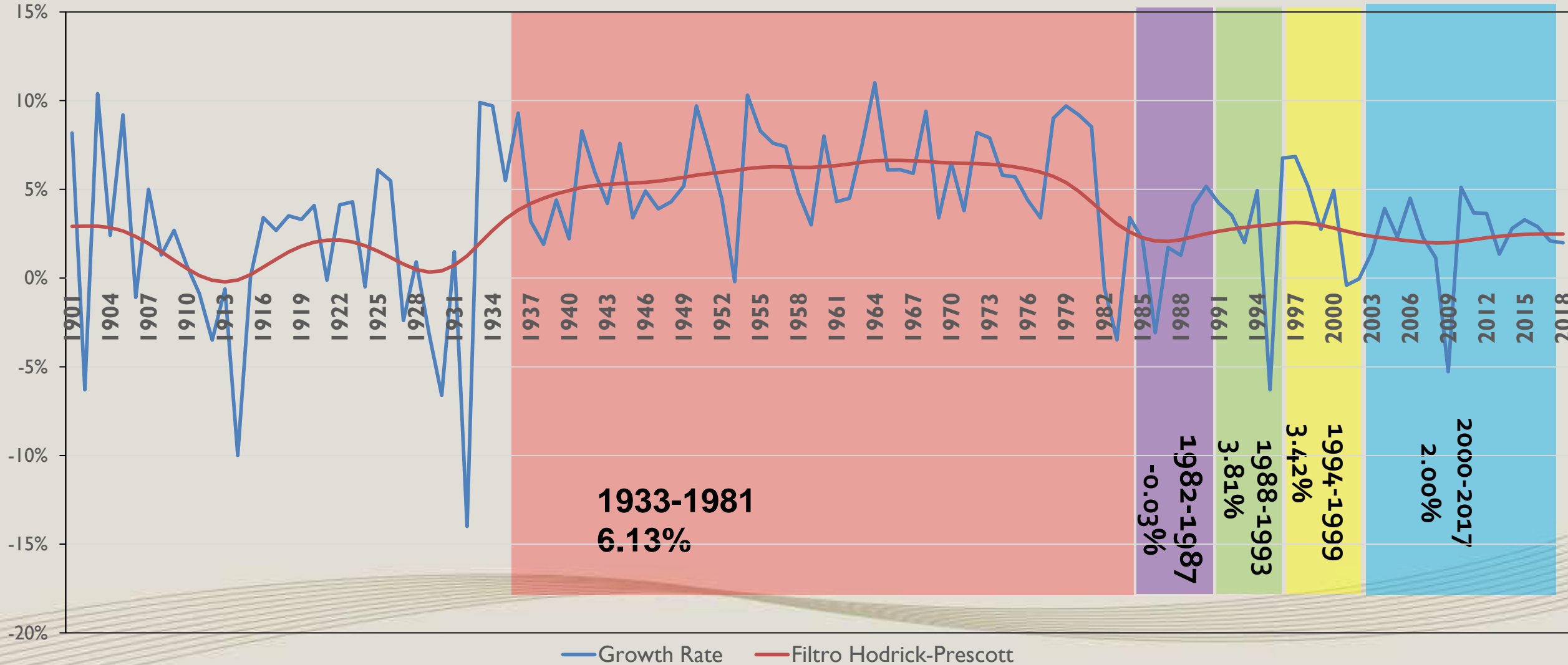


Source: own elaboration based on Penn World Table (2016)



GDP 1901-2018

Growth Rate





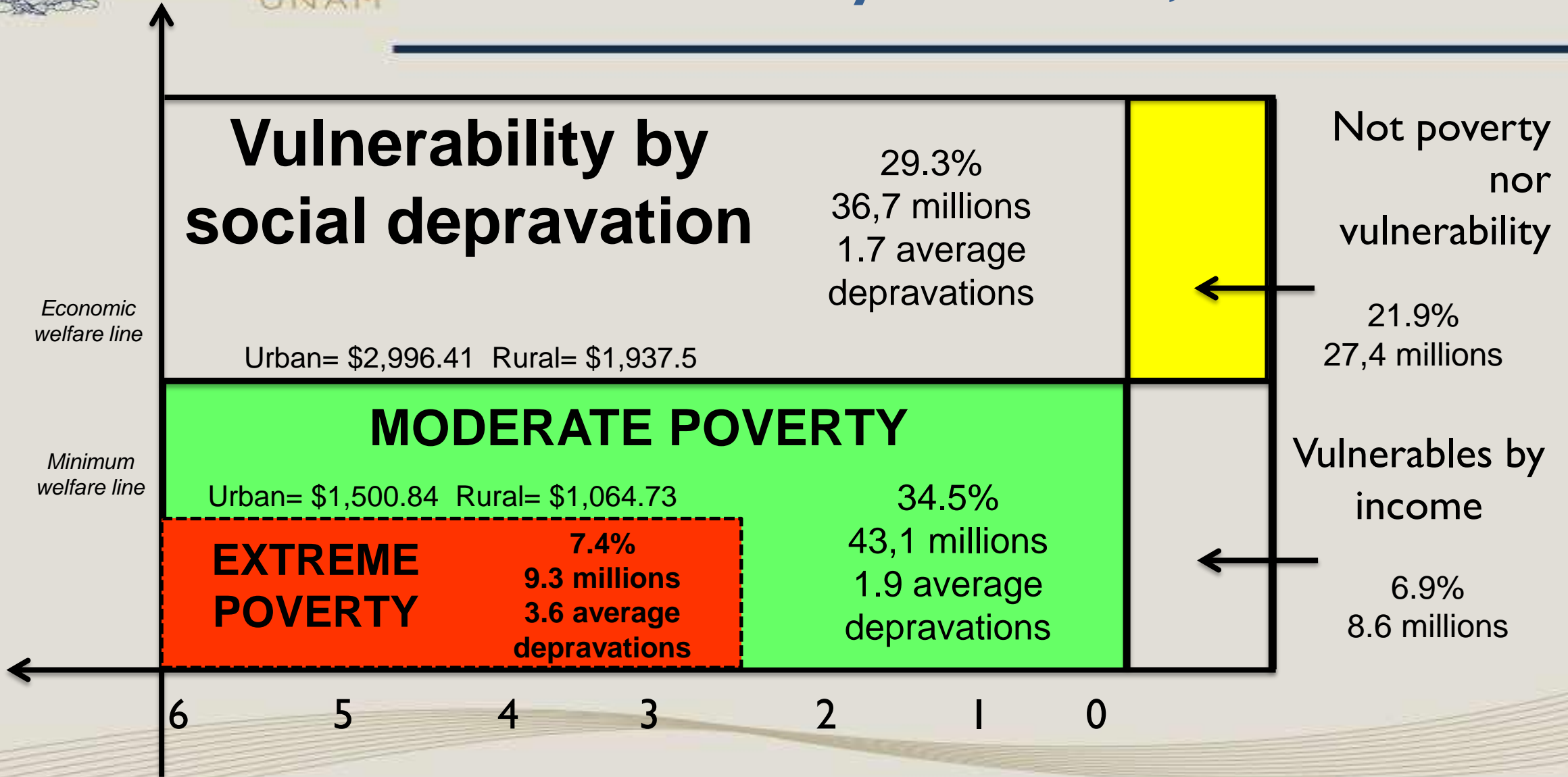
GDP, GDP per cápita and population growth, 1820-2018

	1820-1870	1870-1910	1910-1940	1940-1970	1970-1981	1981-2000	2000-2018
GDP	0.4	3.6	1.3	6.2	6.8	2.1	2.0%
GDP per cápita	-0.2	2.3	0.3	2.9	4.1	0.4	0.7%
Population	0.7	1.2	1	3.2	2.6	1.9	1.3%

Source: elaboration based on Ros & Moreno (2010), INEGI (many years) and Conapo (many years)

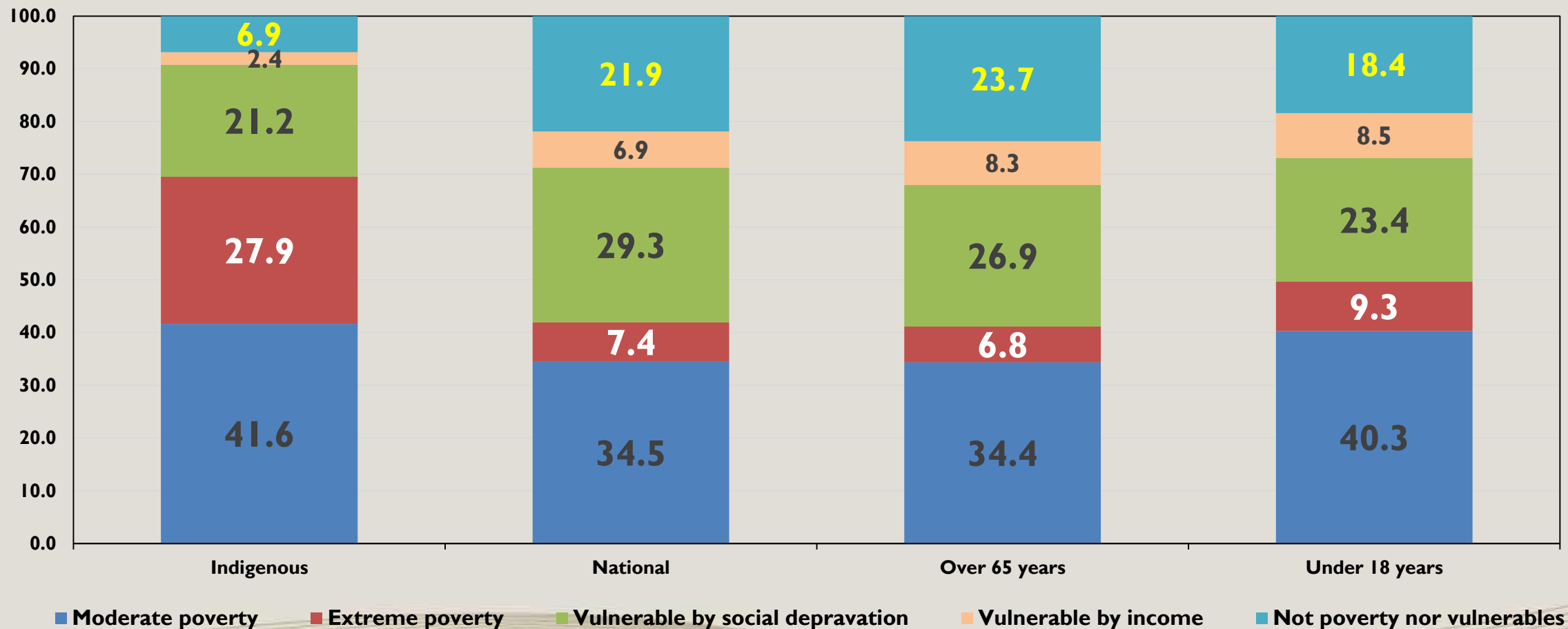


Poverty Indicators, 2018



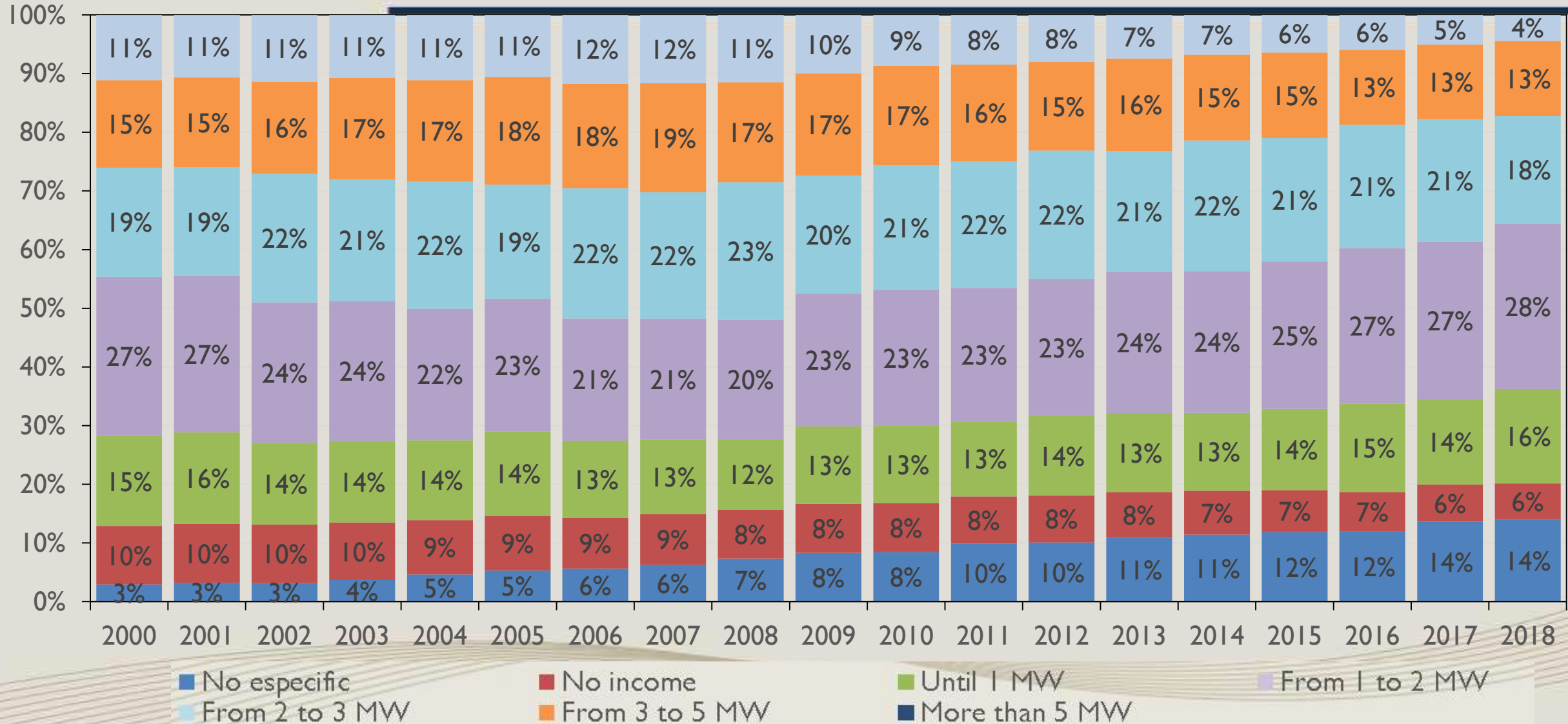


Poverty by selected groups, 2018





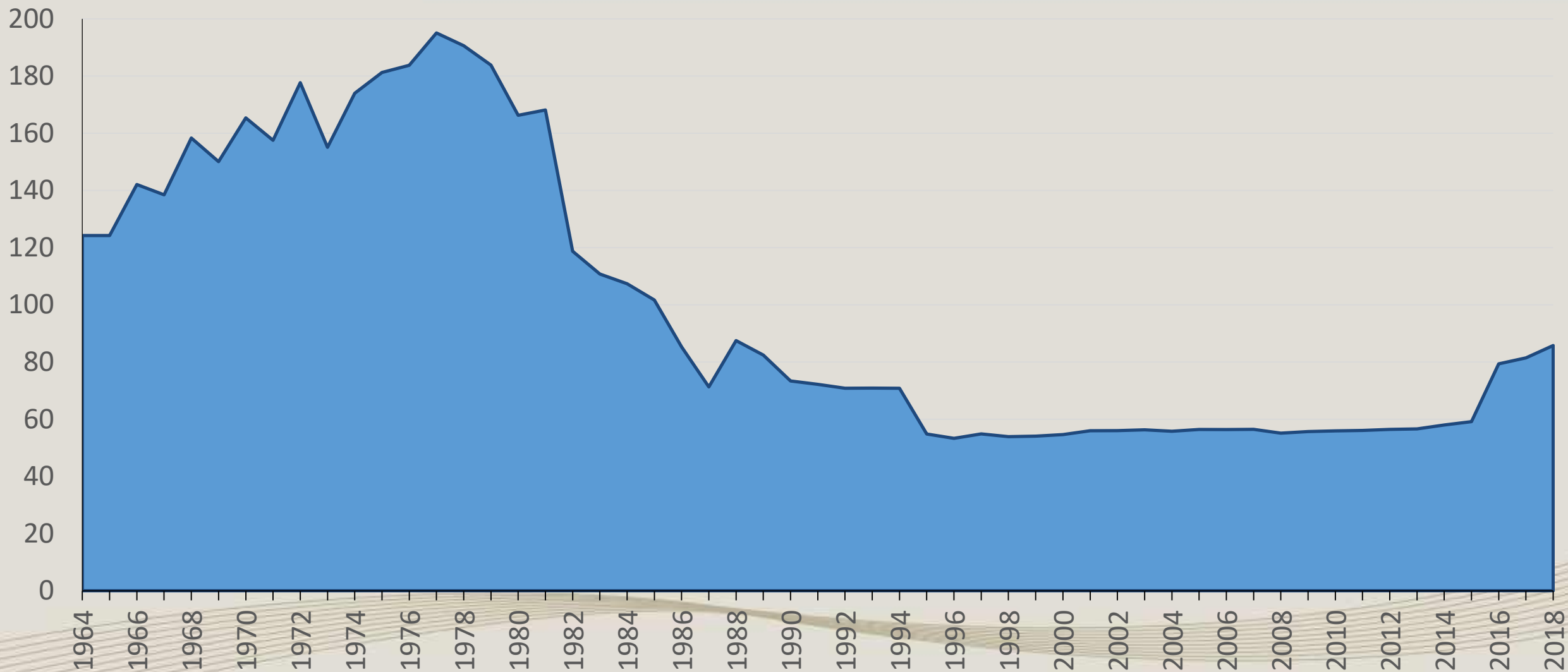
Income level of employed population 2000 - 2018



Source: Income- expenditure national survey

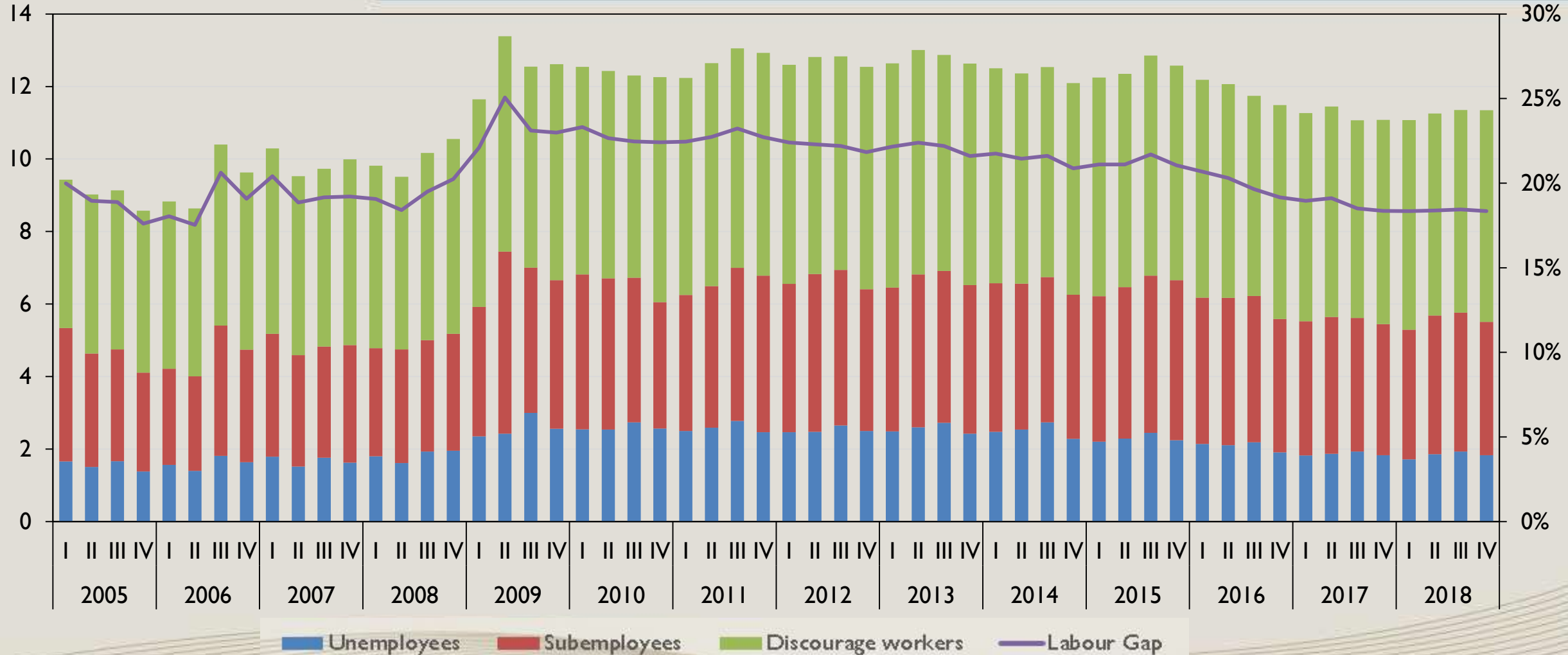


Daily Minimum Real Wage, 1964-2018





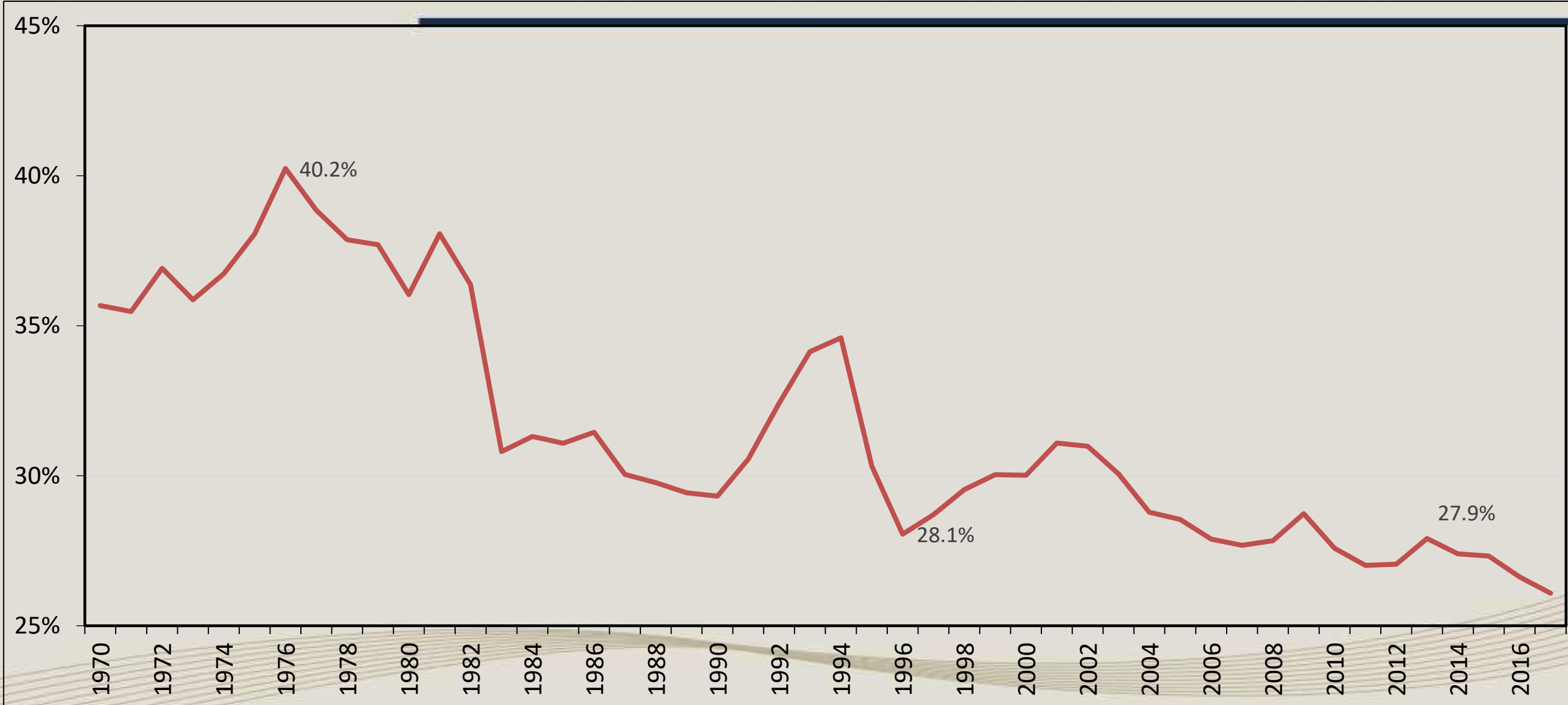
Labour Gap, 2005-2018



Bar graphs represents labour gap composition in millions of persons: unemployed people, plus underemployees, plus no available but disposable population (discourage workers). Line graph (right axis) is the Labour Gap, and it is represented as the share of the labour force plus the discourage workers.



Mexico. Wage participation as share of the GDP, 1970-2017



Source: Samaniego. N.(2014) y Ros. J (2015)



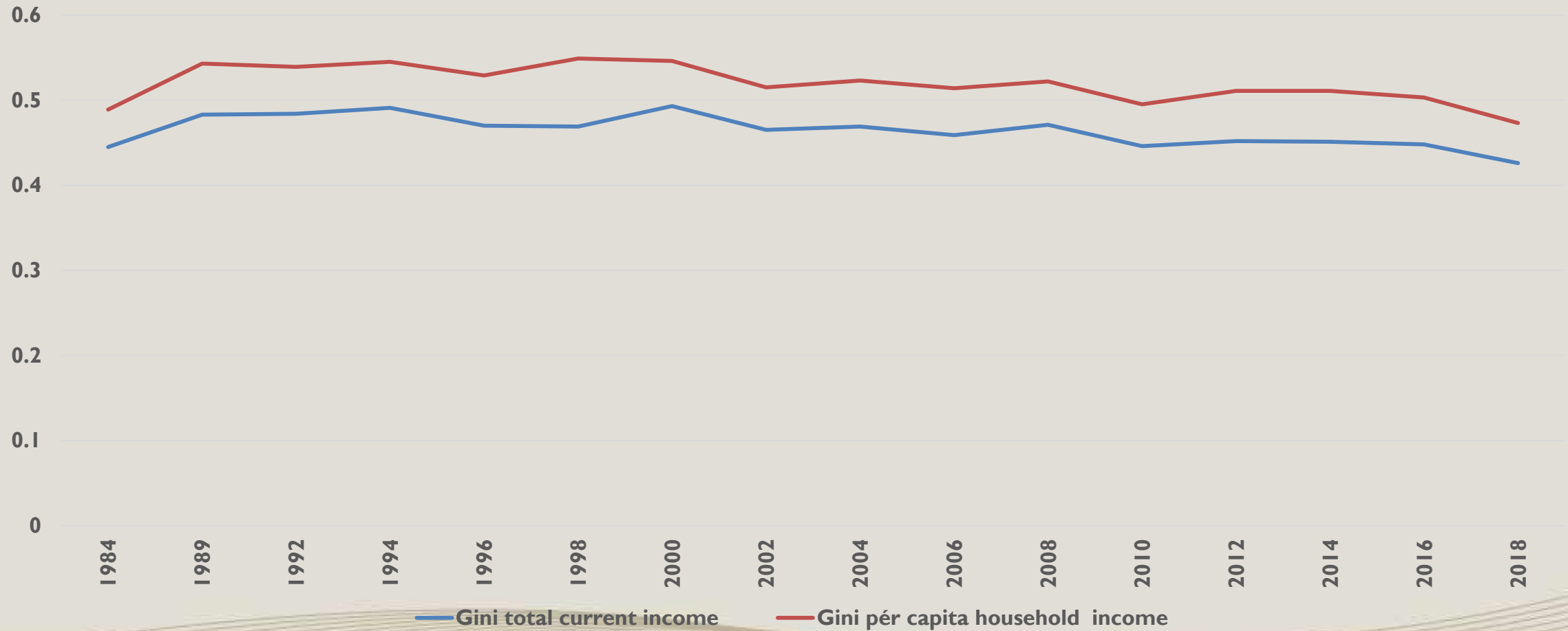
Percentage contribution in total income by household deciles 1977-2018

Deciles	1977	1984	1989	1992	1994	1996	1998	2000	2002	2004	2005	2006	2008	2010	2012	2014	2016	2018
I	1	1.4	1.1	1	1	1.1	0.9	1.1	1.3	1.2	1.1	1.4	1.2	1.2	1.8	1.9	1.8	1.8
II	2	2.5	2.3	2.1	2.1	2.3	2	2.1	2.4	2.6	2.5	2.6	2.4	2.7	3.1	3.2	3.1	3.2
III	2.9	3.6	3.3	3.1	3	3.2	3	3.1	3.4	3.6	3.4	3.6	3.4	3.7	4.1	4.2	4.1	4.3
IV	4	4.6	4.4	4	3.9	4.1	4	4.1	4.4	4.5	4.4	4.5	4.4	4.7	5.1	5.2	5.1	5.4
V	5.2	5.8	5.5	5.1	4.9	5.2	5.2	5.2	5.5	5.6	5.6	5.6	5.5	5.8	6.3	6.3	6.5	6.5
VI	6.6	7.3	6.7	6.3	6.2	6.5	6.5	6.6	6.8	6.9	6.9	6.9	6.9	7.1	7.6	7.5	7.5	7.9
VII	8.5	9.2	8.5	8.1	8	8.2	8.2	8.3	8.5	8.6	8.6	8.5	8.7	8.9	9.3	9.1	9.1	9.5
VIII	11.6	12	11	10.8	10.5	10.9	10.9	10.8	11.1	11.1	11	10.9	11.2	11.5	11.8	11.4	11.5	11.9
IX	17.1	16.8	15.6	15.9	15.6	15.6	16	15.9	16.1	15.9	15.8	15.8	15.9	16.1	16	15.7	15.5	15.8
X	41.2	36.8	41.6	43.6	44.7	42.8	43.3	42.7	40.5	39.9	40.7	40.1	40.3	38.2	34.9	35.4	36.3	33.6

Source: elaborated by Dr. Fernando Cortés based on ENIGH, many years.

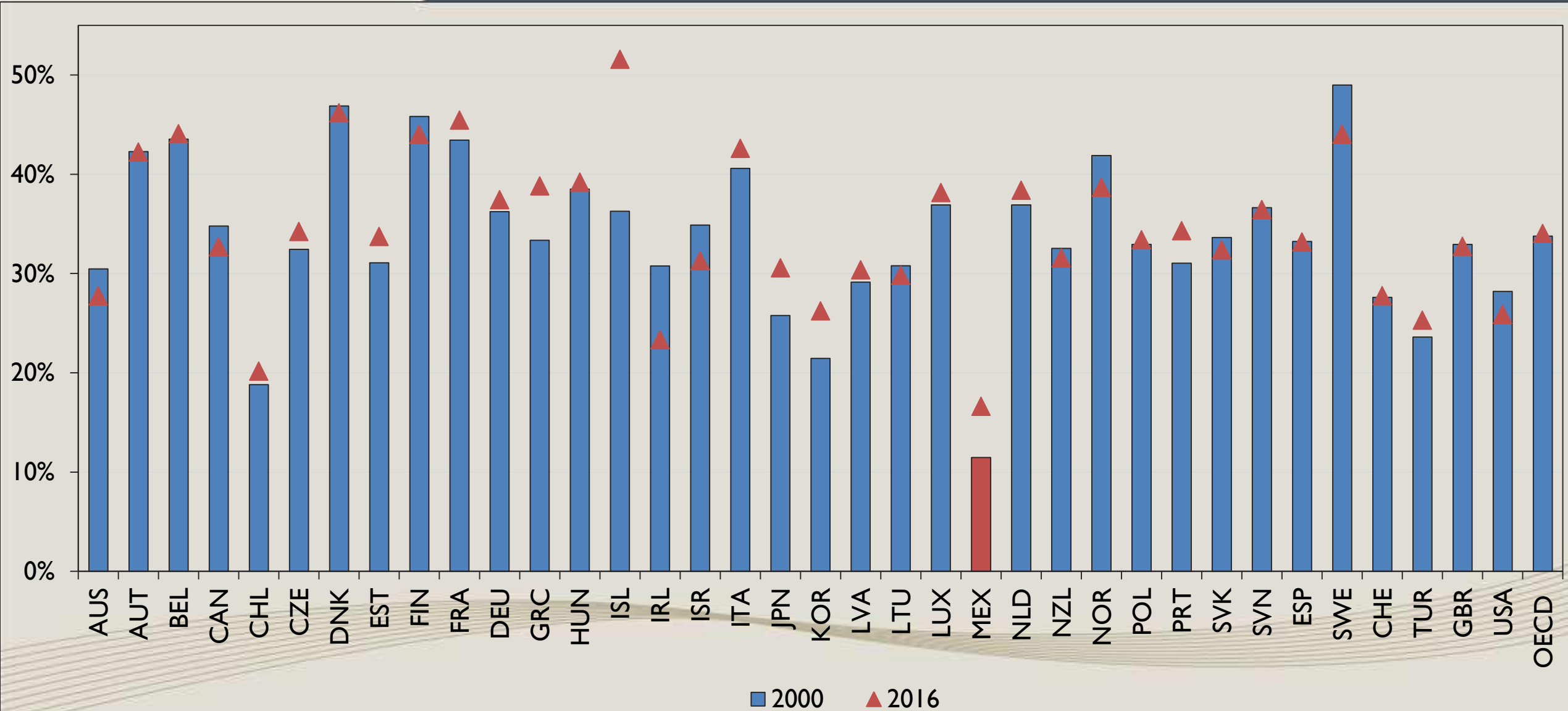


Evolution of Gini coefficient in Mexico





Total tax revenues as percentage of GDP , 2000 y 2016





Programa
Universitario
de **Estudios**
del **Desarrollo**

UNAM

Thank you

cordera@unam.mx